

PART OF THE SW.1\4, OF SECTION 18, T.5N., R.2W., S.L.B. & M.  
ODENWALDER SUBDIVISION AMD.

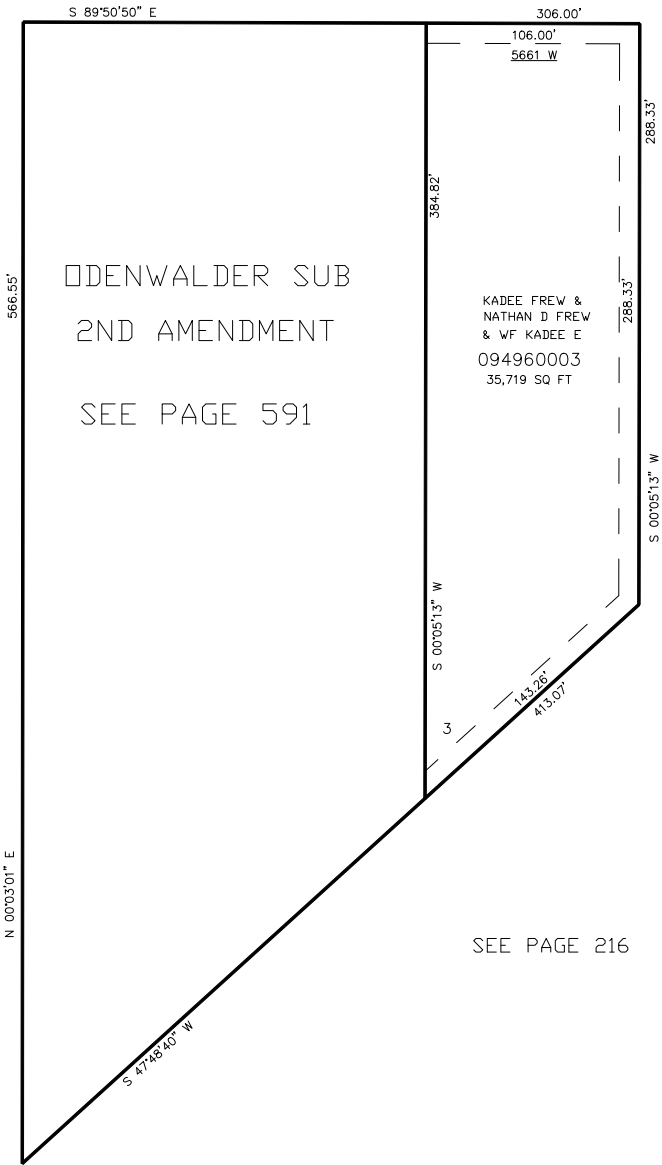
IN WEBER COUNTY  
SCALE 1" = 50'

TAXING UNIT: 376

SEE PAGE 79

5300 SOUTH STREET

SEE PAGE 79



SEE PAGE 80

10' UTILITY & DRAINAGE EASEMENTS EACH  
SIDE OF PROPERTY LINES AS INDICATED  
BY DASHED LINES EXCEPT AS OTHERWISE  
SHOWN.

FOR COMPLETE ENG DATA SEE  
ORIGINAL DEDICATION PLAT IN  
BOOK 54, PAGE 40 OF RECORDS.